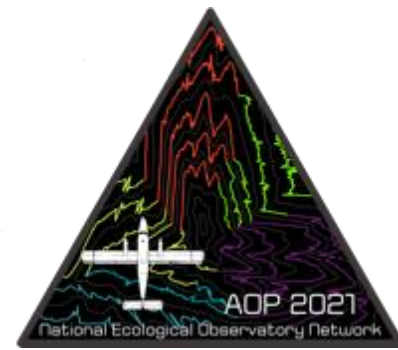




## Payload 1 Daily Flight Report



**Date:** 2021-09-27

**Flight Campaign ID:** P1C2

**Airport, FBO ID, City:** Ocala International Airport (KOCF) - Ocala, FL

**Aircraft:** N331AR

**Domain:** 03 (Southeast)

**Sites Flown:** DSNY (Disney Wilderness Preserve ), OSBS\_P1 (Ordway-Swisher Biological Station Priority 1 )

**Days left in Domain:** 7

**Report Author:** Cameron Chapman

**Lidar Operators:** Cameron Chapman

**Flight Hours:** 04:13

**Spectrometer Operators:** Elissa Barris

**Hours until maintenance:** 19.83

**Pilots:** Nick Koukoutsakis, Justin Eddington

**GPS Instruments:** 05 - FBO\_KOCF, AOP\_OSBS, FDOT-FLCC

### Summary

Initially clear skies over Ordway-Swisher Biological Station allowed for the collection of 2 priority lines over the airshed in green sky conditions before clouds push the collection into suboptimal conditions. The crew switched focus and went to Disney Wilderness Preserve where clouds lifted above flight altitude. We were able to collect the remaining 23 lines and complete initial coverage.

### Concerns

- Transfer speeds from the Lidar crystal desktop computer to USB thumb-stick is progressively slowing.

### Comments

- None

### Daily Coverage

Estimated Cloud Cover Key

Green:	Yellow:	Red:
0-10%	11-50%	>50%

D03|OSBS\_P1

Line #	11	12
Lidar	✓	✓
Spectrometer	✓	✓
Camera	✓	✓
Cloud Cover	Green	Green

Total number of lines flown: 2

D03 | DSNY

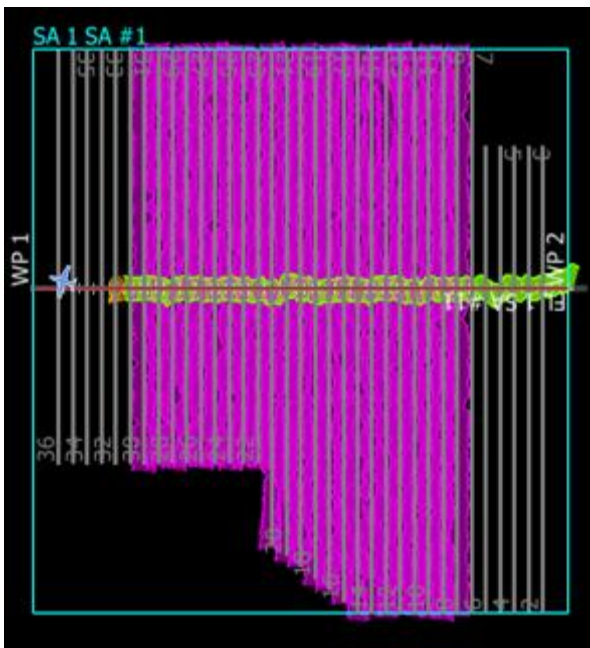
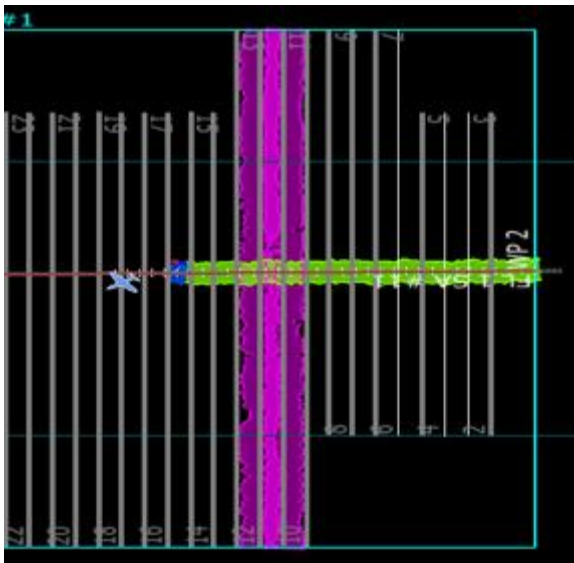
Line #	8	9	10	11	12	13	14	15	16	17	18	19	20	21	22	23	24	25	26	27
Lidar	✓	✓	✓	✓	✓	✓	✓	✓	✓	✓	✓	✓	✓	✓	✓	✓	✓	✓	✓	✓
Spectrometer	✓	✓	✓	✓	✓	✓	✓	✓	✓	✓	✓	✓	✓	✓	✓	✓	✓	✓	✓	✓
Camera	✓	✓	✓	✓	✓	✓	✓	✓	✓	✓	✓	✓	✓	✓	✓	✓	✓	✓	✓	✓
Cloud Cover																				

Line #	28	29	30
Lidar	✓	✓	✓
Spectrometer	✓	✓	✓
Camera	✓	✓	✓
Cloud Cover			

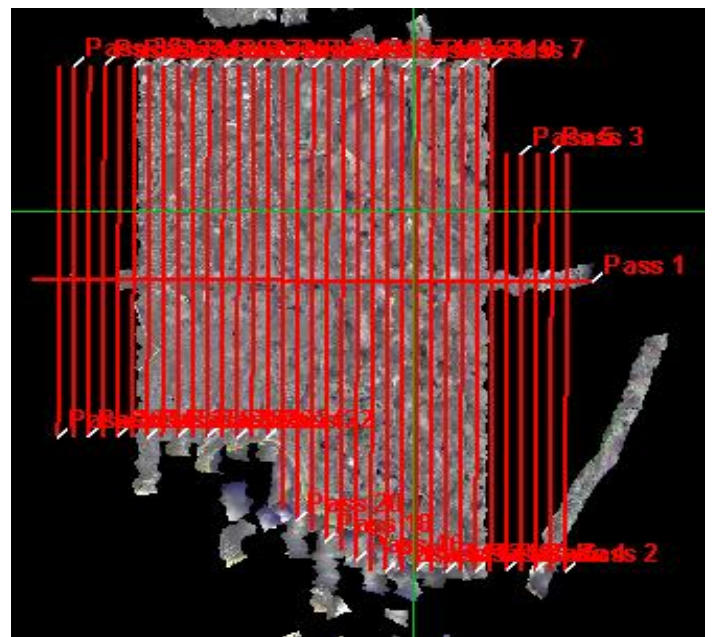
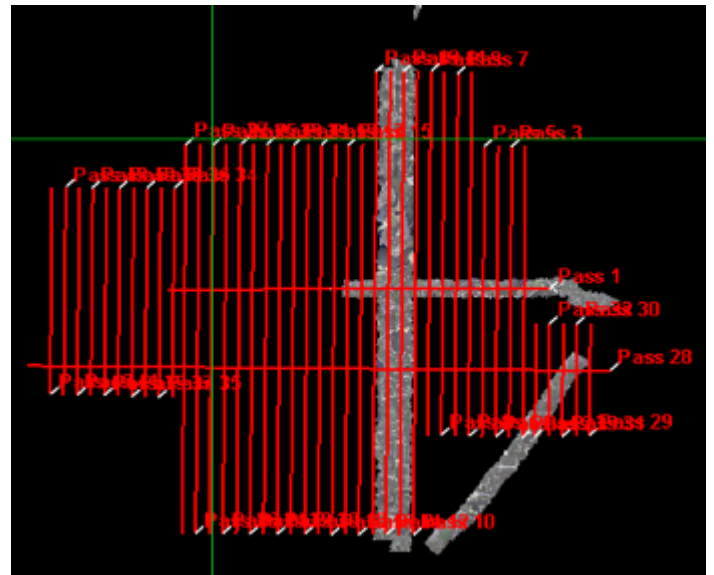
Total number of lines flown: 23

Flight Screenshots

Lidar



NIS



Pictures: None

### Cumulative Domain Coverage

#### D03|DSNY (Disney Wilderness Preserve )

1	2	3	4	5	6	7	8	9	10	11	12	13	14	15	16	17	18	19	20
21	22	23	24	25	26	27	28	29	30	31	32	33	34	35	36				

Flown: 100% (36/36)  
Green: 0% (0/36)  
Yellow: 25% (9/36)  
Red: 75% (27/36)

#### D03|JERC\_P1 (Jones Ecological Research Center Priority 1 )

1	2	3	4	5	6	7	8	9	10	11	12	13	14	15	16	17	18	19	20
21	22	23	24	25	26														

Flown: 100% (26/26)  
Green: 100% (26/26)  
Yellow: 0% (0/26)  
Red: 0% (0/26)

#### D03|JERC\_P2 (Jones Ecological Research Center Priority 2)

27	28	29	30	31	32	33	34	35	36	37	38	39	40	41	42	43	44	45	46
47	48	49	50	51															

Flown: 96% (24/25)  
Green: 0% (0/25)  
Yellow: 0% (0/25)  
Red: 96% (24/25)

#### D03|N03B (D03 Nominal Runway South)

1	2
---	---

Flown: 100% (2/2)  
Green: 0% (0/2)  
Yellow: 0% (0/2)  
Red: 100% (2/2)

#### D03|OSBS\_P1 (Ordway-Swisher Biological Station Priority 1 )

1	2	3	4	5	6	7	8	9	10	11	12	13	14	15	16	17	18	19	20
21	22	23	24	25	26	27													

Flown: 100% (27/27)  
Green: 7% (2/27)  
Yellow: 4% (1/27)  
Red: 89% (24/27)

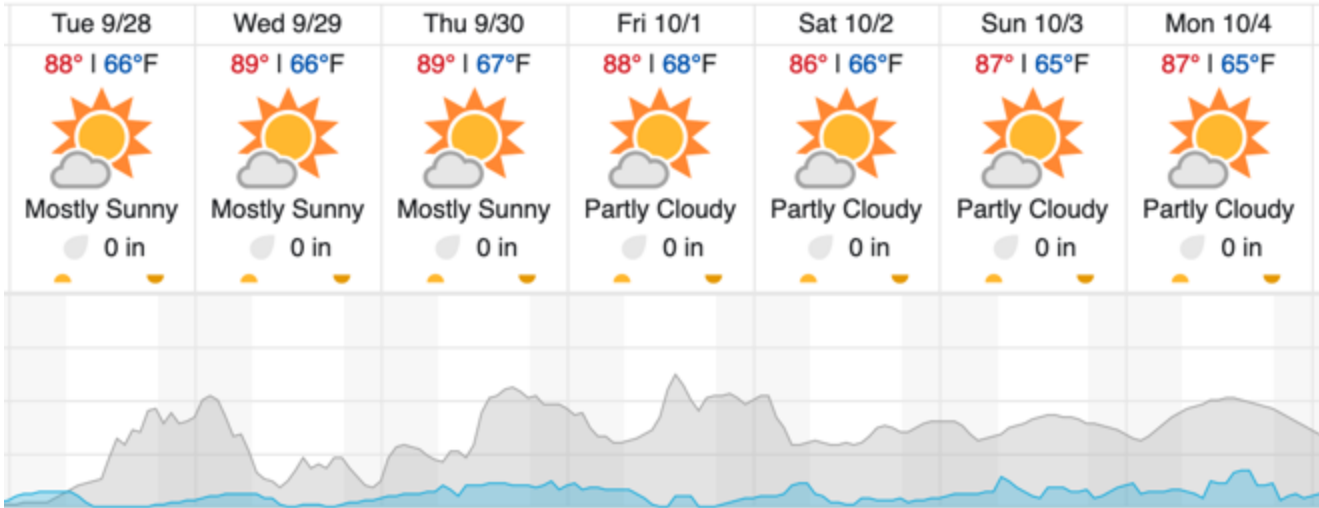
#### D03|OSBS\_P2 (Ordway-Swisher Biological Station Priority 2 )

28	29	30	31	32	33	34	35	36	37	38	39	40	41	42	43
----	----	----	----	----	----	----	----	----	----	----	----	----	----	----	----

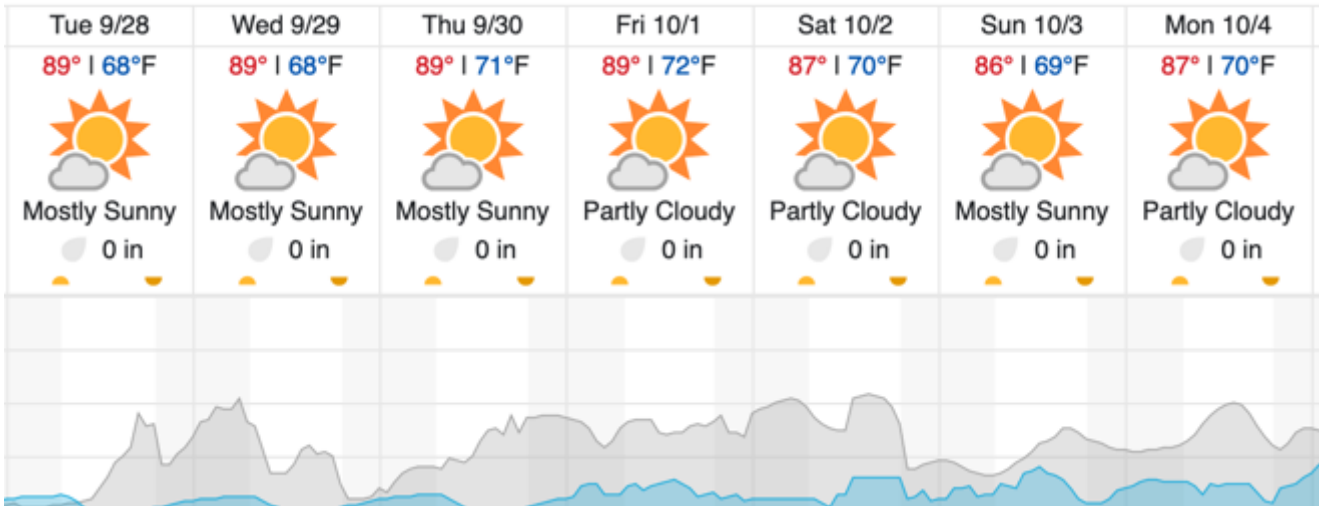
Flown: 100% (16/16)  
Green: 0% (0/16)  
Yellow: 0% (0/16)  
Red: 100% (16/16)

## Weather Forecast

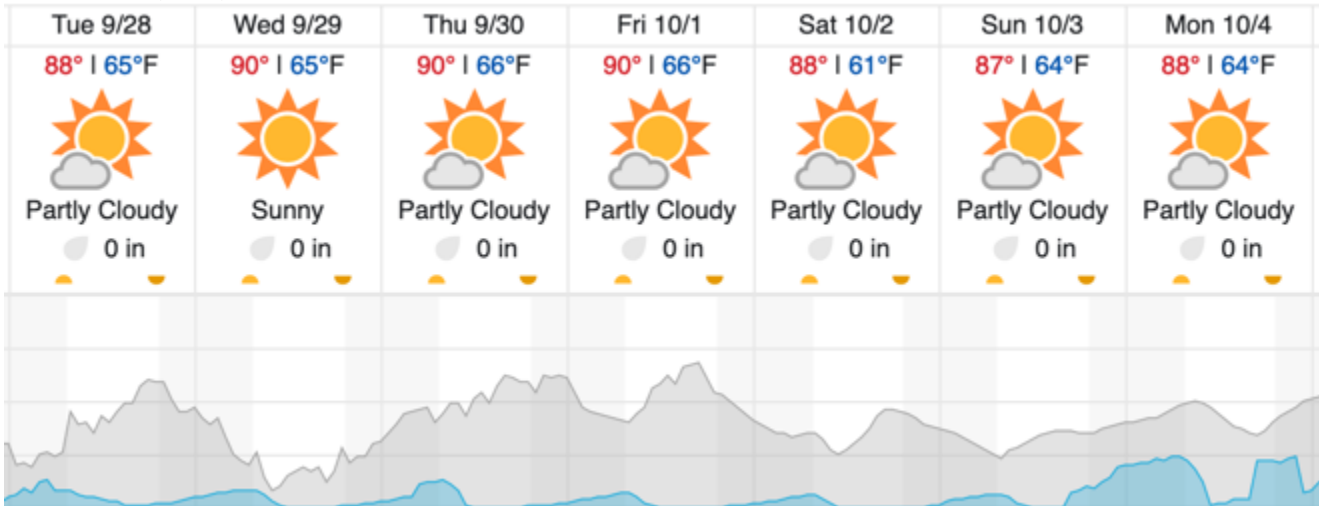
Gainesville, FL (OSBS)



Kissimmee, FL (DSNY)



Newton, GA (JERC)



 Cloud Cover (%)	 Chance of Precip. (%)
--	---

source: wunderground.com

## **Flight Collection Plan for 28 September 2021**

*Flyority 1 – Only if Green*

Collection Area: Ordway-Swisher Biological Station (OSBS) P1

Flight Plan Name: D03\_OSBS\_C1\_P1\_P2\_v3\_PRM.xml

On-Station Time: 1440 UTC / 1040 L

*Flyority 2 - Only if Green*

Collection Area: Disney Wilderness Preserve (DSNY)

Flight Plan Name: D03\_DSNY\_R1\_P1\_v3\_PRM.xml

On-Station Time: 1430 UTC/ 1030 L

*Flyority 3 – Only if Green*

Collection Area: Ordway-Swisher Biological Station (OSBS) P2

Flight Plan Name: D03\_OSBS\_C1\_P1\_P2\_v3\_PRM.xml

On-Station Time: 1440 UTC/ 1040 L

*Flyority 4 – Only if Green*

Collection Area: Jones Ecological Research Center (JERC) P2

Flight Plan Name: D03\_JERC\_R2\_P1\_P2\_v4\_PRM.xml

On-Station Time: 1440 UTC/ 1040 L

Crew: Elissa, Cam