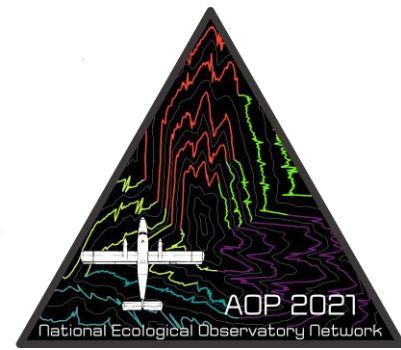




## Payload 1 Daily Flight Report



**Date:** 2021-07-24

**Flight Campaign ID:** P1C2

**Airport, FBO ID, City:** Portland-Hillsborough Airport (KHIO) - Hillsboro, OR

**Aircraft:** N331AR

**Domain:** 16 (Pacific Northwest)

**Sites Flown:** ABBY (Abby Road ), WREF\_P2 (Wind River Experimental Forest Priority 2)

**Days left in Domain:** 3

**Report Author:** Abe Morrison

**Lidar Operators:** Abe Morrison

**Flight Hours:** 04:13

**Spectrometer Operators:** Mitch Haynes

**Hours until maintenance:** 84.22

**Pilots:** Justin Eddington, Nick Koukoutsakis

**GPS Instruments:** 05 - FBO\_KHIO, AOP\_ABBY, AOP\_WREF

### Summary

Today there was a very thick low haze layer that persisted all day. The crew seeing cloudy forecasts for the next few days decided to collect the remaining lines in the ABBY and WREF\_P2 flight boxes. 31 lines were collected at ABBY and 5 collected at WREF\_P2, all in "red" sky conditions.

### Concerns

-We continue to see the "Failure Digitizer 1: CarvedWF Buffer Overflow!" error in FMSnav. This persisted throughout today's flight.

-We also received a new warning today on the cross strip line at ABBY "Camera 1 GSD Violation. Desired GSD 6.36cm actual GSD 8.52cm"

### Comments

-Raid 8 was shipped today.

### Daily Coverage

Estimated Cloud Cover Key

Green:	Yellow:	Red:
0-10%	11-50%	>50%

D16|WREF\_P2

Line #	1	74	75	76	77	78
Lidar	✓		✓	✓	✓	✓
Spectrometer		✓	✓	✓	✓	✓
Camera	✓		✓	✓	✓	✓
Cloud Cover						

Total number of lines flown: 6

D16|ABBY

Line #	2	3	4	5	6	7	8	9	10	11	12	13	14	15	16	17	18	19	20	21
Lidar	✓	✓	✓	✓	✓	✓	✓	✓	✓	✓	✓	✓	✓	✓	✓	✓	✓	✓	✓	✓
Spectrometer	✓	✓	✓	✓	✓	✓	✓	✓	✓	✓	✓	✓	✓	✓	✓	✓	✓	✓	✓	✓
Camera	✓	✓	✓	✓	✓	✓	✓	✓	✓	✓	✓	✓	✓	✓	✓	✓	✓	✓	✓	✓
Cloud Cover																				

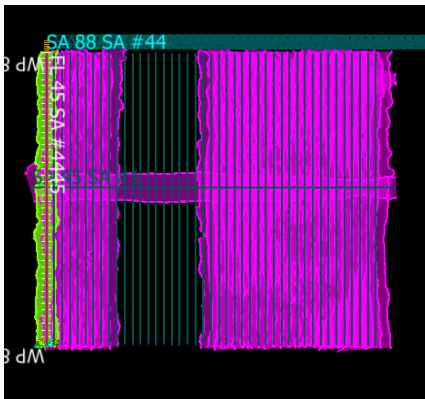
Line #	22	23	36	37	38	39	40	41	42	43	44
Lidar	✓	✓	✓	✓	✓	✓	✓	✓	✓	✓	✓
Spectrometer	✓	✓	✓	✓	✓	✓	✓	✓	✓	✓	✓
Camera	✓	✓	✓	✓	✓	✓	✓	✓	✓	✓	✓
Cloud Cover											

Total number of lines flown: 31

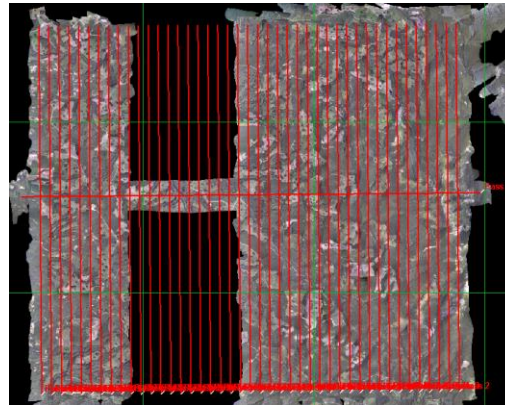
Flight Screenshots

Lidar

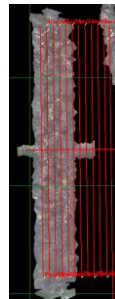
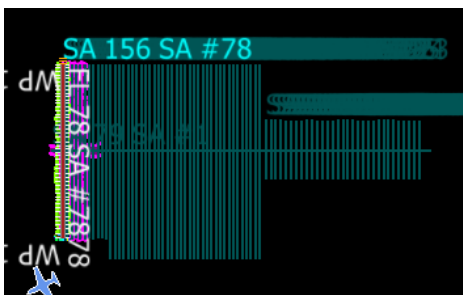
ABBY



NIS



WREF\_P2



Cumulative Domain Coverage

D16|ABBY (Abby Road )

1	2	3	4	5	6	7	8	9	10	11	12	13	14	15	16	17	18	19	20
21	22	23	24	25	26	27	28	29	30	31	32	33	34	35	36	37	38	39	40
41	42	43	44																

Flown: 100% (44/44)

Green: 30% (13/44)

Yellow: 0% (0/44)

Red: 70% (31/44)

D16 | MCRA (McRae Creek)

1	2	3	4	5	6	7	8	9
---	---	---	---	---	---	---	---	---

Flown: 100% (9/9)  
 Green: 100% (9/9)  
 Yellow: 0% (0/9)  
 Red: 0% (0/9)

D16 | N16A (D16 Nominal Runway )

1
---

Flown: 100% (1/1)  
 Green: 100% (1/1)  
 Yellow: 0% (0/1)  
 Red: 0% (0/1)

D16 | WREF\_P1 (Wind River Experimental Forest Priority 1 )

1	2	3	4	5	6	7	8	9	10	11	12	13	14	15	16	17	18	19	20
21	22	23	24	25	26	27	28	29	30	31	32	33	34	35	36	37	38	39	40
41	42	43	44	45	46	47	48	49	50	51	52	53	54	55	56	57			

Flown: 100% (57/57)  
 Green: 100% (57/57)  
 Yellow: 0% (0/57)  
 Red: 0% (0/57)

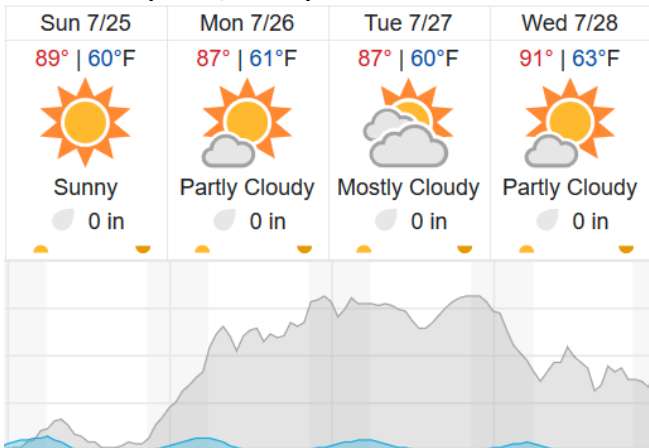
D16 | WREF\_P2 (Wind River Experimental Forest Priority 2)

58	59	60	61	62	63	64	65	66	67	68	69	70	71	72	73	74	75	76	77
78																			

Flown: 100% (21/21)  
 Green: 0% (0/21)  
 Yellow: 76% (16/21)  
 Red: 24% (5/21)

Weather Forecast

Carson WA (ABBY, WREF)



Cloud Cover (%)	Chance of Precip. (%)
-----------------	-----------------------

source: wunderground.com

**Flight Collection Plan for July 25 2021**

Flyority 1

Collection Area: Abby Road (ABBY)

Flight Plan Name: D16\_ABBY\_R1\_P1\_v2\_PRM.xml

On-Station Time: 1650 UTC/ 0950 L

Flyority 2

Collection Area: Wind River Experimental Forest (WREF) - Priority 2 Flight Box

Flight Plan Name: D16\_WREF\_C1\_P1\_P2\_v3\_PRM.xml

On-Station Time: 1640 UTC/ 0940 L

Crew: Abe, Mitch